

From pre-consecration until the end of their ministry, a Bishop will meet and speak with various teams and individuals across the National Church Institutions. This page summarises the support on offer to Bishops and includes contacts for the relevant teams. More information will be added to this page over time.

## Support timeline

### 1. Pre-Consecration

Archbishops' Advisors  
for Appointments  
and Vocations

Pre-appointment checks  
and medicals

See houses

Early discussion and visit  
to house to discuss  
requirements

### 2. Post-Consecration

Archbishops' Council

Welcome and introduction

Ministry Development

Welcome and Bishop's  
induction

Safeguarding\*

Bishops are safeguarding  
leads within the diocese.  
Safeguarding provide  
introductory training

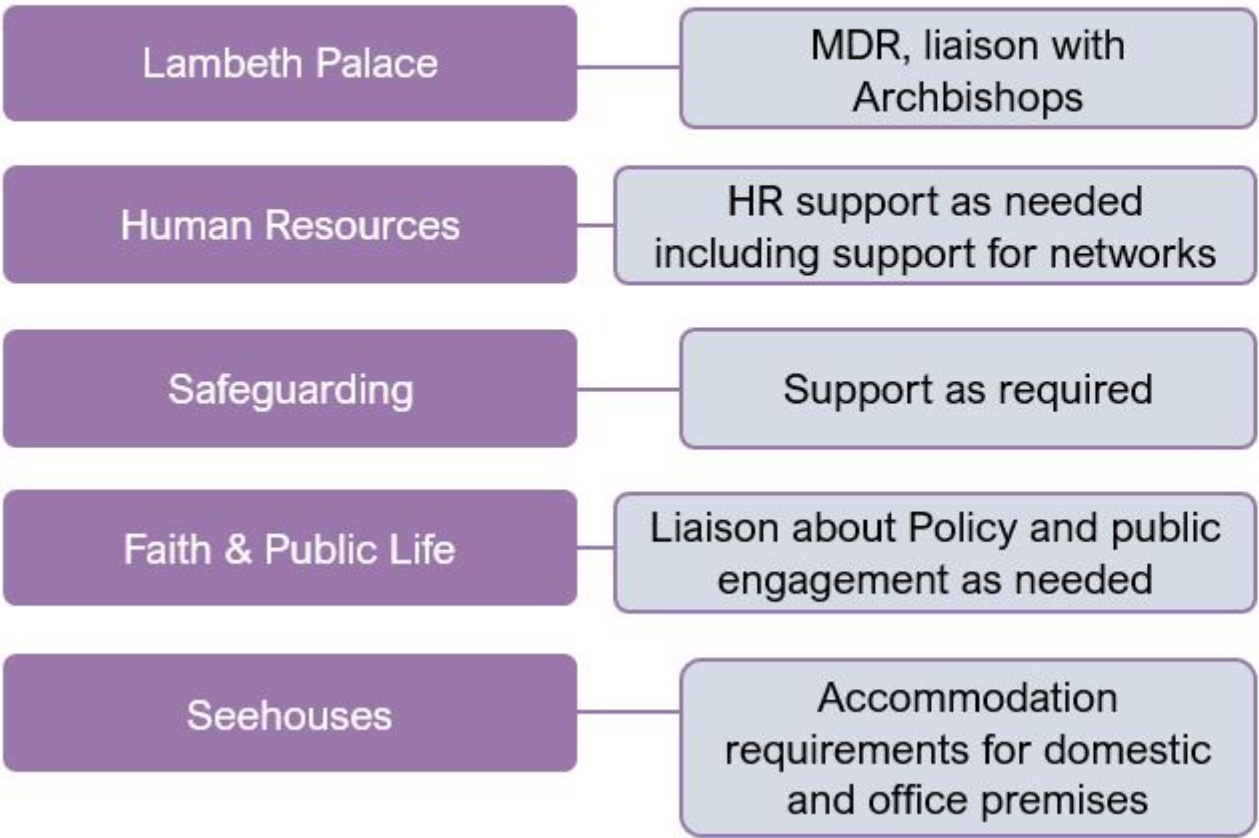
Bishoprics & Cathedrals  
Finance team\*

Resettlement  
Ministry

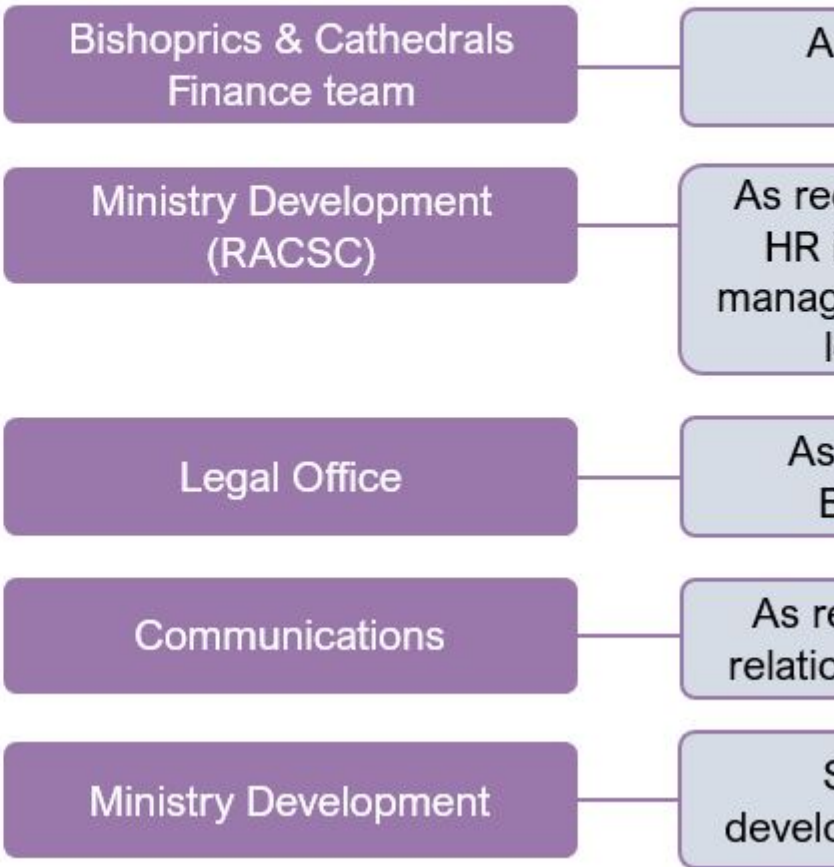
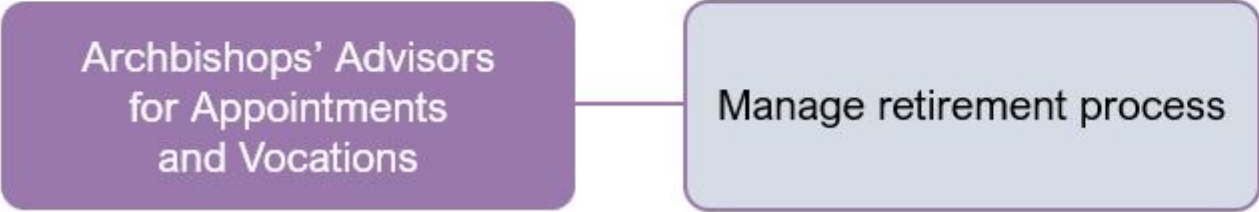
Communications\*

*\*All teams take part in the Bishop's induction.  
These teams provide key training or information*

### 3. Ongoing during Ministry



### 4. End of Ministry



## An overview of NCI teams

Below is a summary of the role different teams at the NCIs play in supporting a Bishop.

[Download the structure chart for the National Church Institutions](#)

### Archbishops' Advisors for Appointments and Vocations

The Archbishops' Advisors for Appointments and Vocations team will carry out pre-appointment and DBS checks and medicals when a Bishop is appointed. They also organise the retirement process for clergy.

**Contact:** [aaav.office@churchofengland.org](mailto:aaav.office@churchofengland.org)

### Archbishops Council Secretariat

A Bishop will hear from AC at the start of their journey once consecrated and throughout for House of Bishops, General Synod, College of Bishops, and Standing Committees.

**Contact:** [acsecretariat@churchofengland.org](mailto:acsecretariat@churchofengland.org)

### Bishoprics and Cathedrals (Finance)

The team meet with all incoming bishops about how the Ministry Grant Funding works and what they can claim towards removal and resettlement costs. Training sessions for Bishops' support staff are arranged as needed.

**Contact:** [nicola.elliott@churchofengland.org](mailto:nicola.elliott@churchofengland.org)

### Bishoprics and Cathedrals (See House)

Property management for Bishops. A significant part of the interface with Diocesan Bishops is at the time of their appointment following the public announcement and as and when property issues need to be dealt with.

**Contact:** [seehouses@churchofengland.org](mailto:seehouses@churchofengland.org)

### Communications

Bishops are provided with media training and interview techniques. Bishops with more of a lead role will have more active involvement with the Communications team.

Visit the [Communications team page](#) for contact details.

### Faith & Public Life

This team frequently work with Bishops on areas such Christian ethics in public life, Parliament and Government; advice on public policy matters; ecumenical relations; relationships in the Anglican Communion and interfaith relations.

**Contact:** [malcolm.brown@churchofengland.org](mailto:malcolm.brown@churchofengland.org)

### Human Resources

HR provide services to Bishops in their corporate capacity including recruitment, ER issues, performance reviews, learning and development and all relevant HR matters.

**Contact:** [hr.operations@churchofengland.org](mailto:hr.operations@churchofengland.org)

Bishops will approach this team or HR to discuss a case (e.g., long term sickness, pastoral breakdown, performance issues) and they provide information and advice.

**Contact:** [hr.clergy@churchofengland.org](mailto:hr.clergy@churchofengland.org)

[National HR Resources page](#)

### Office of the Archbishops - Lambeth Palace

The Bishop to the Archbishops' team oversee many aspects of bishops' ministries as they relate to the Archbishops including [Ministerial Development Reviews](#) (MDRs), pastoral care and retirements. Annual calls and regional meetings are arranged.

### Legal Office

The Legal Office support the Bishoprics and Cathedral Committee and the development of policy and guidance. They provide support for legal costs and property legal services in connection with Seehouses. Contact is case-by-case dependent.

**Contact:** [legal@churchofengland.org](mailto:legal@churchofengland.org)

### Ministry Development

The team manage senior leadership development and learning (SLDP), and [Ministerial Development Reviews](#) (MDRs) and organise inductions for Bishops. The team communicate frequently with Bishops about MDRs and learning programmes and events.

Bishops will approach this team or HR to discuss a case (e.g., long term sickness, pastoral breakdown, performance issues) and for information and advice.

[Visit the Senior Leadership Learning and Development page.](#)

### Safeguarding

As safeguarding leads in their Diocese, Safeguarding do an induction with bishops as soon as they are appointed and liaise with Bishops or their staff when necessary.

---

**Source URL:** <https://www.churchofengland.org/resources/clergy-resources/resources-bishops>